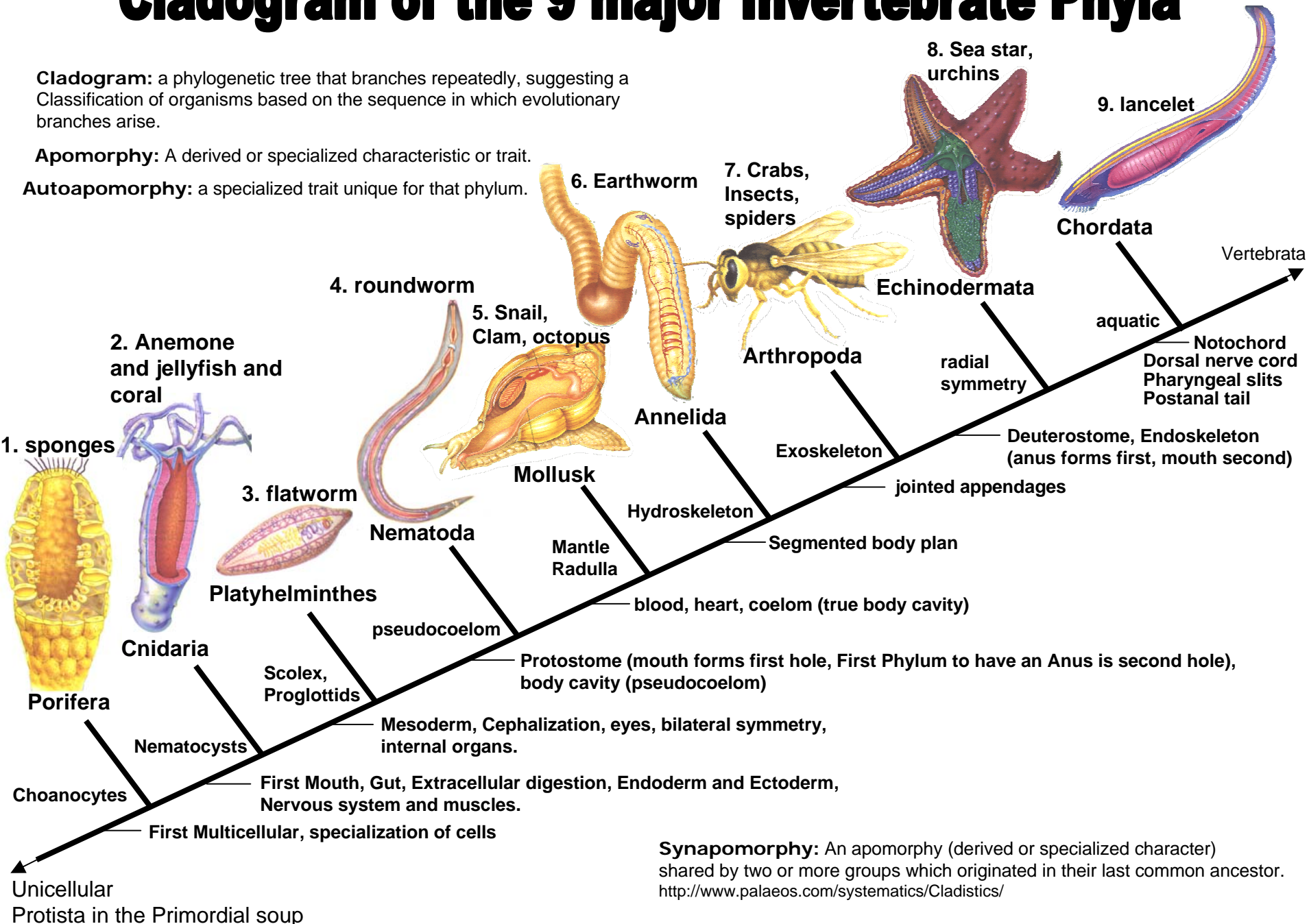


Cladogram of the 9 major Invertebrate Phyla

Cladogram: a phylogenetic tree that branches repeatedly, suggesting a Classification of organisms based on the sequence in which evolutionary branches arise.

Apomorphy: A derived or specialized characteristic or trait.

Autoapomorphy: a specialized trait unique for that phylum.



Synapomorphy: An apomorphy (derived or specialized character) shared by two or more groups which originated in their last common ancestor.
<http://www.palaeos.com/systematics/Cladistics/>