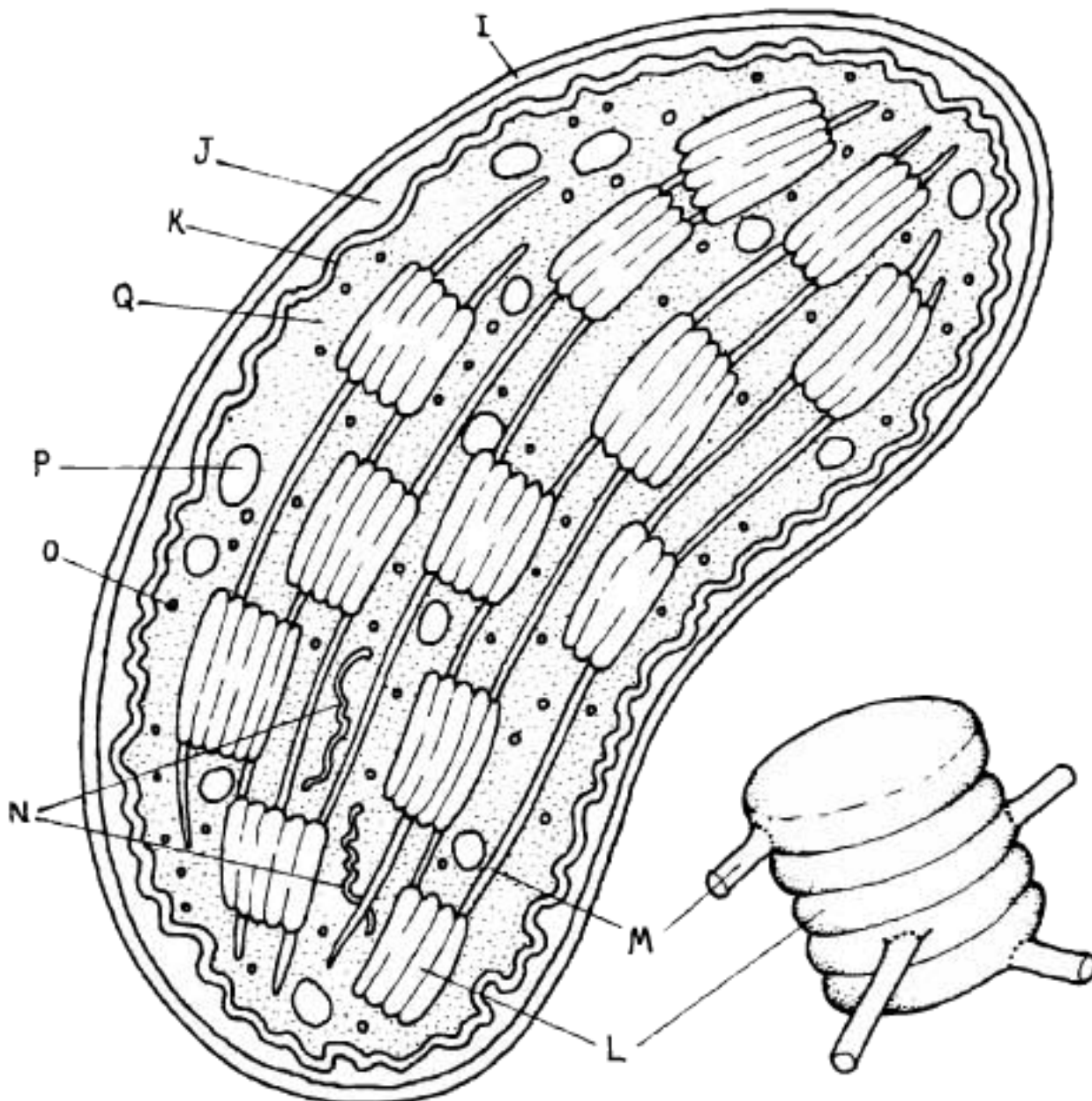
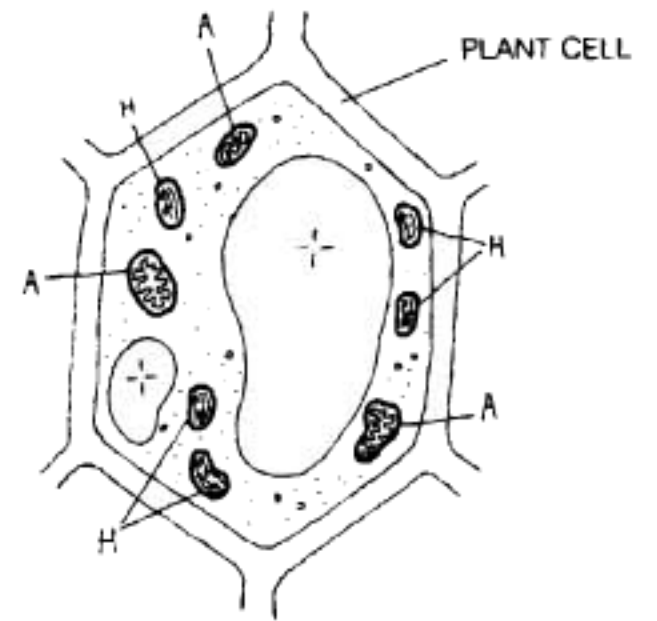
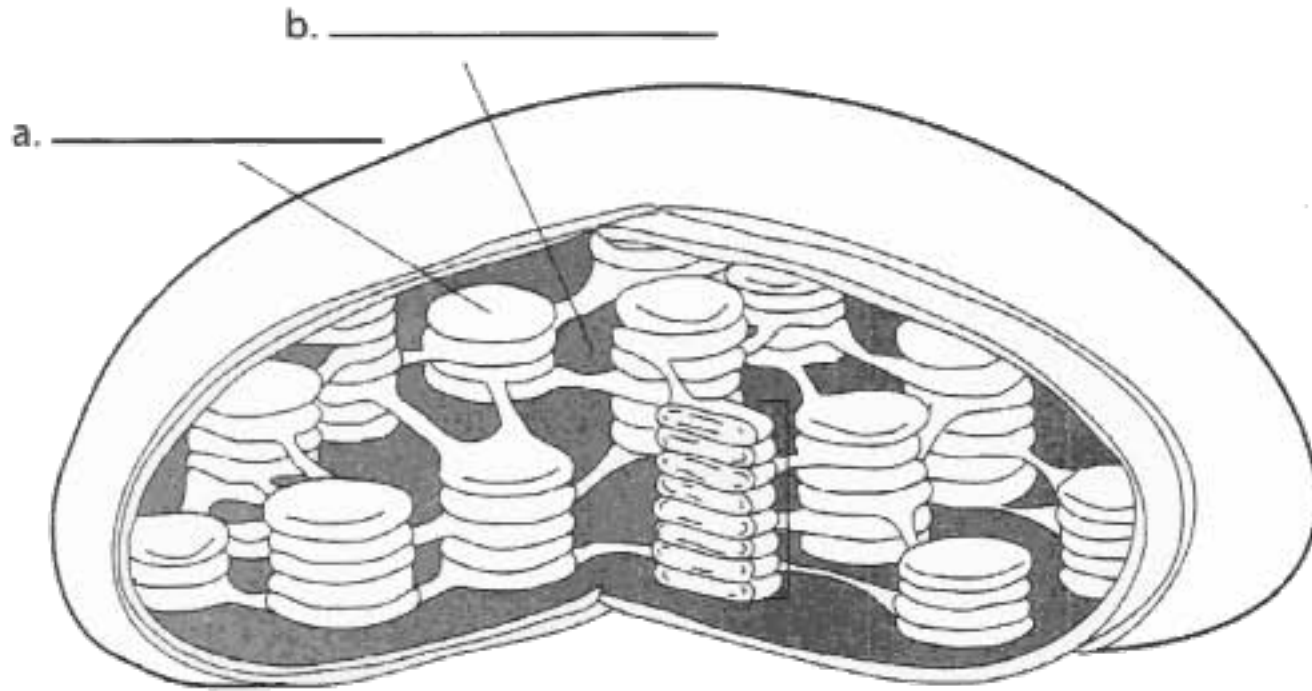


CHLOROPLAST



CHLOROPLAST_H
 OUTER MEMBRANE,
 INTERMEMBRANE SPACE,
 INNER MEMBRANE_K
 GRANUM_★
 THYLAKOID_L
 STROMAL LAMELLA_M
 DNA_N
 RIBOSOME,
 STARCH GRAIN_P
 STROMA_O