

Types of connective tissue.

(\*Color the same in all drawings)

**Label figure 4.3a:**

a. mesenchyme (embryonic tissue)

**Color (trace) and label:**

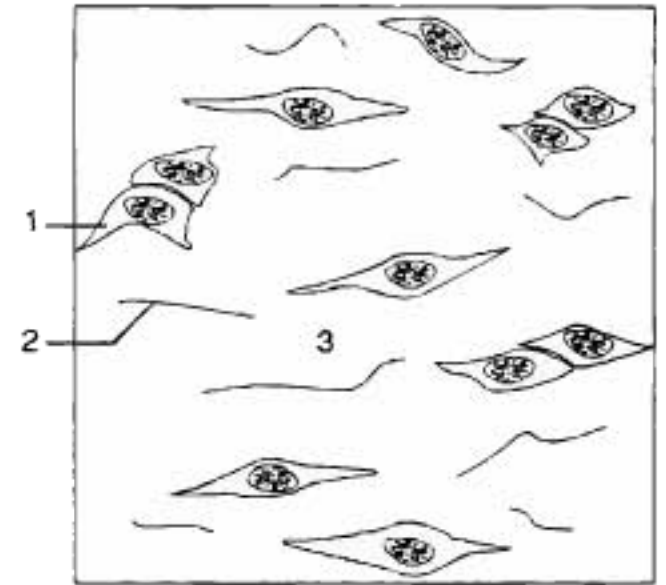
1. ○ mesenchymal cells
2. ○ fibers
3. ○ matrix\*

**Label figure 4.3b-f:**

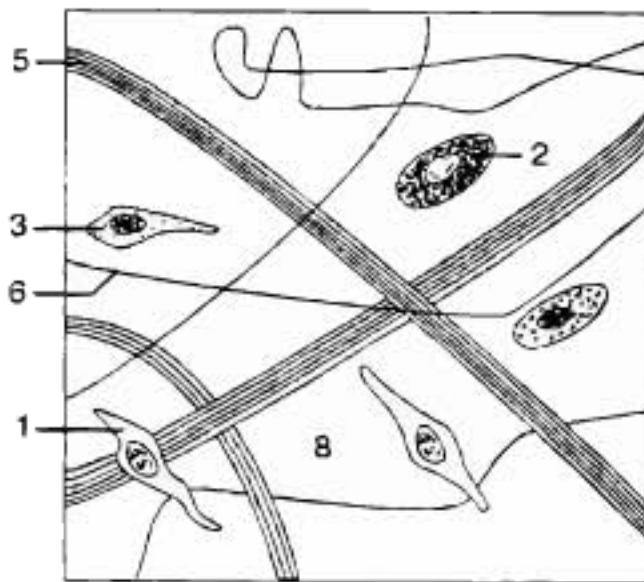
- b. loose (also called areolar)
- c. dense irregular
- d. dense regular
- e. elastic
- f. reticular tissue

**Color (or trace) and label:**

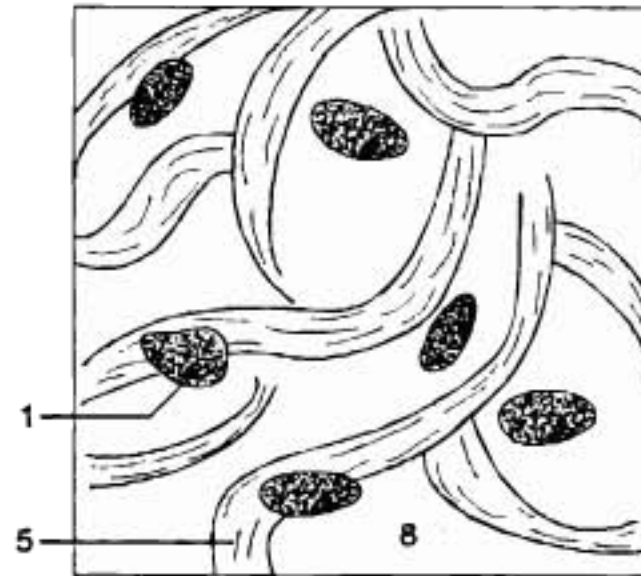
1. ○ fibroblasts (fibroblast nuclei)\*
2. ○ mast cells
3. ○ macrophage cells
4. ○ reticular cells
5. ○ collagen fibers\*
6. ○ elastic fibers\*
7. ○ reticular fibers
8. ○ matrix\*



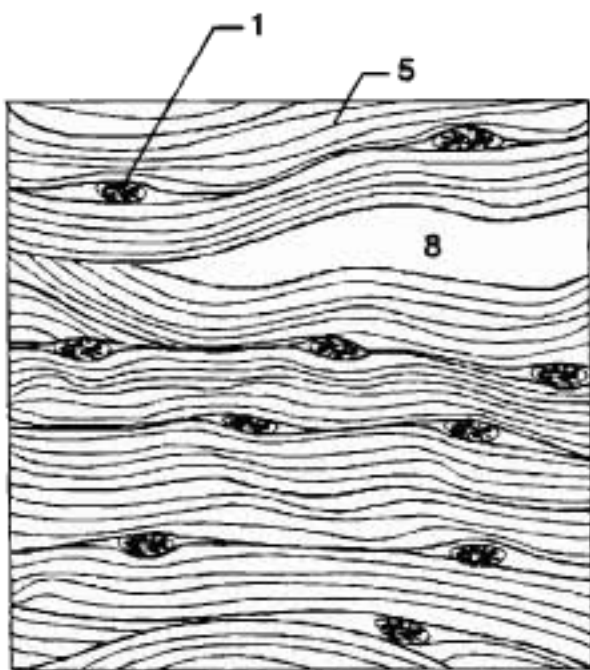
a



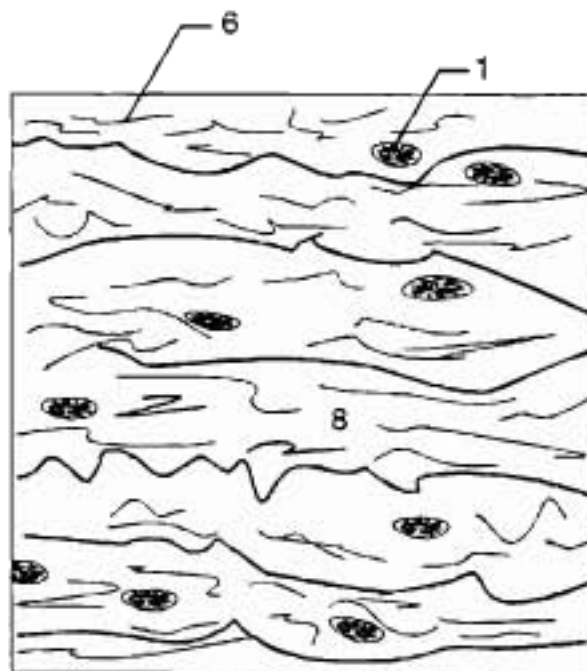
b



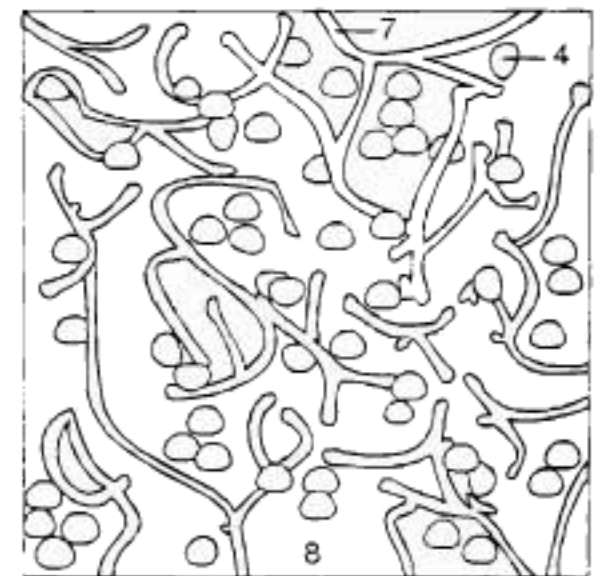
c



d



e



f