

Types of connective tissue.

(\*Color the same in all drawings)

Label figure 4.3a:

a. mesenchyme (embryonic tissue)

Color (trace) and label:

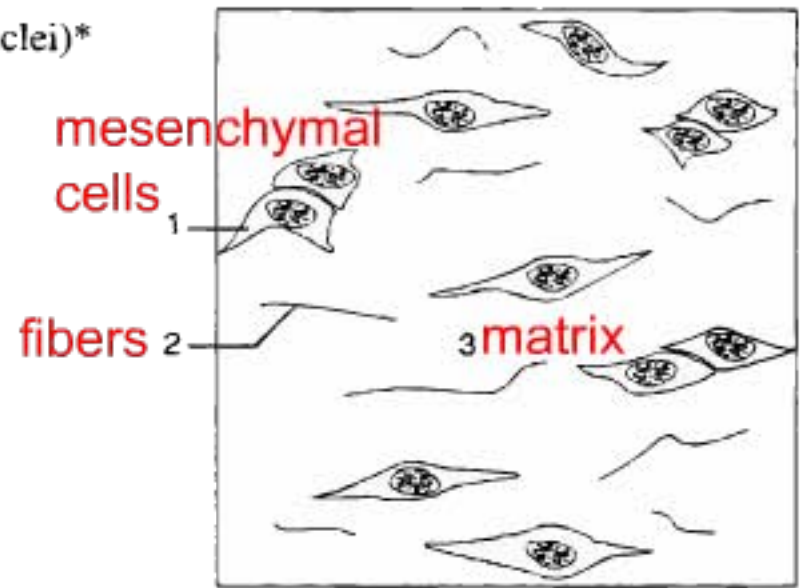
1. ○ mesenchymal cells
2. ○ fibers
3. ○ matrix\*

Label figure 4.3b-f:

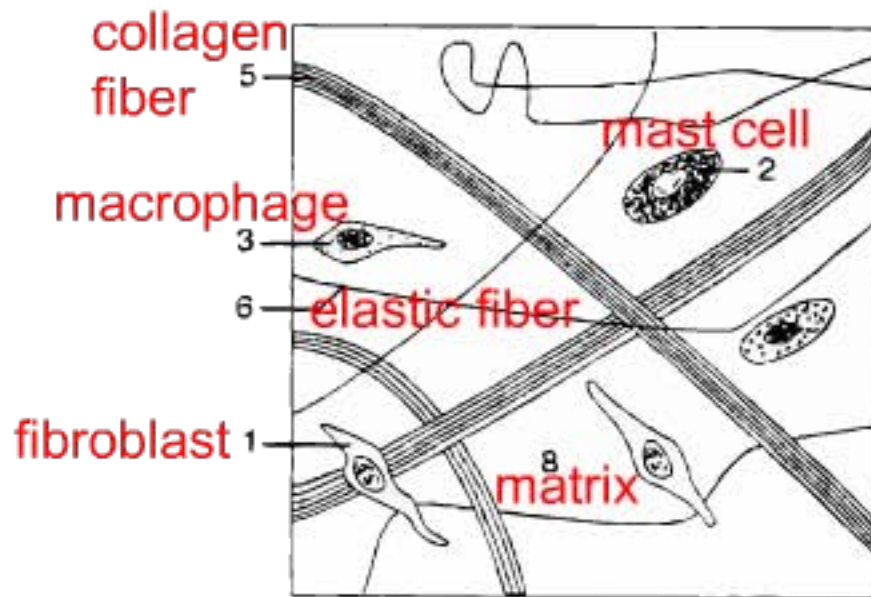
- b. loose (also called areolar)
- c. dense irregular
- d. dense regular
- e. elastic
- f. reticular tissue

Color (or trace) and label:

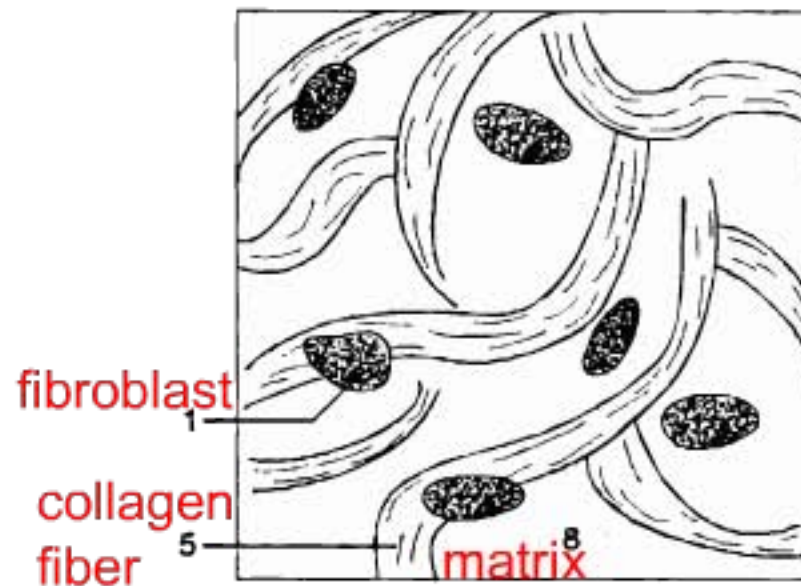
1. ○ fibroblasts (fibroblast nuclei)\*
2. ○ mast cells
3. ○ macrophage cells
4. ○ reticular cells
5. ○ collagen fibers\*
6. ○ elastic fibers\*
7. ○ reticular fibers
8. ○ matrix\*



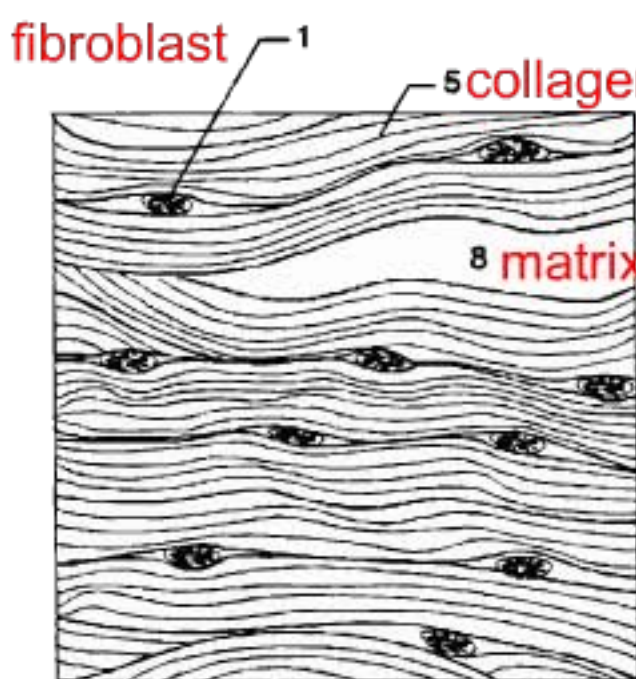
a mesenchyme  
embryonic tissue



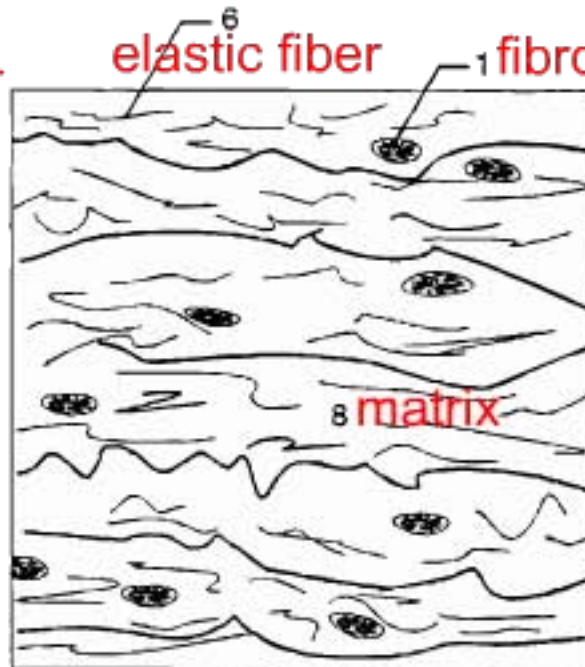
b loose "areolar"  
superficial fascia



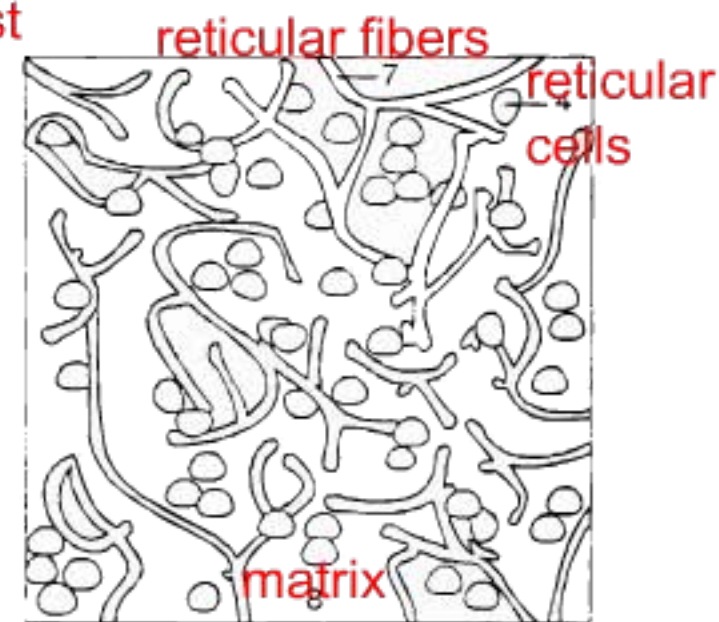
c dense irregular  
dermis "leather"



d dense regular  
ligaments and tendons



e elastic  
stomach, lungs  
and bladder walls



f reticular  
lymph nodes, bone marrow