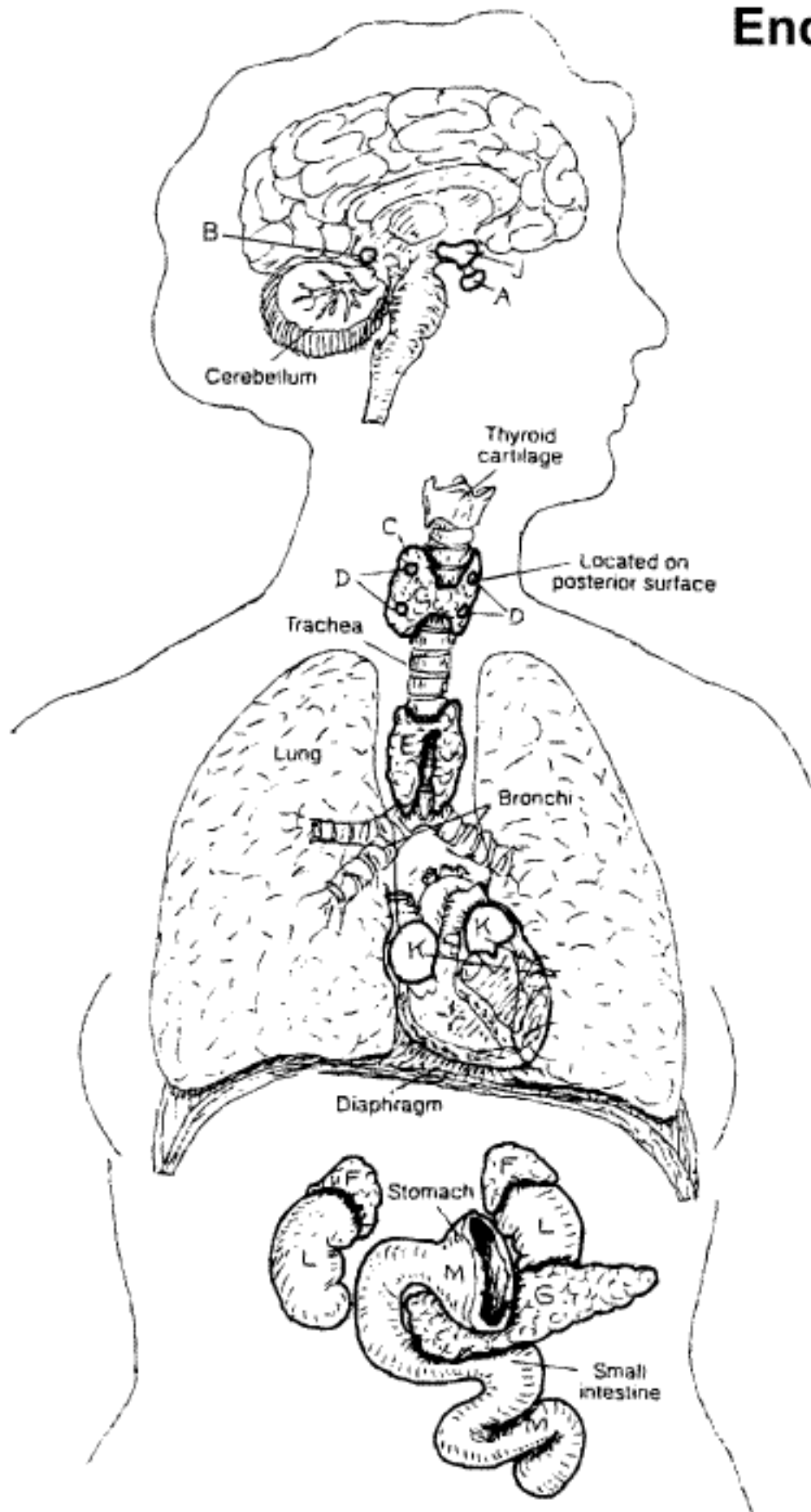
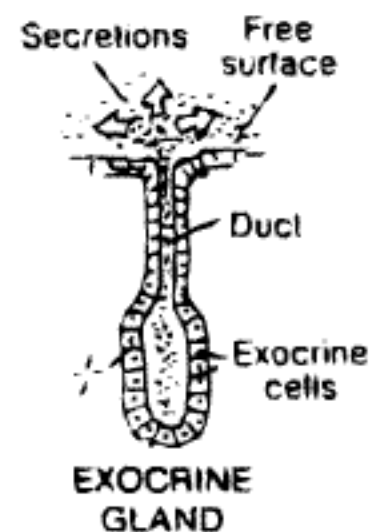
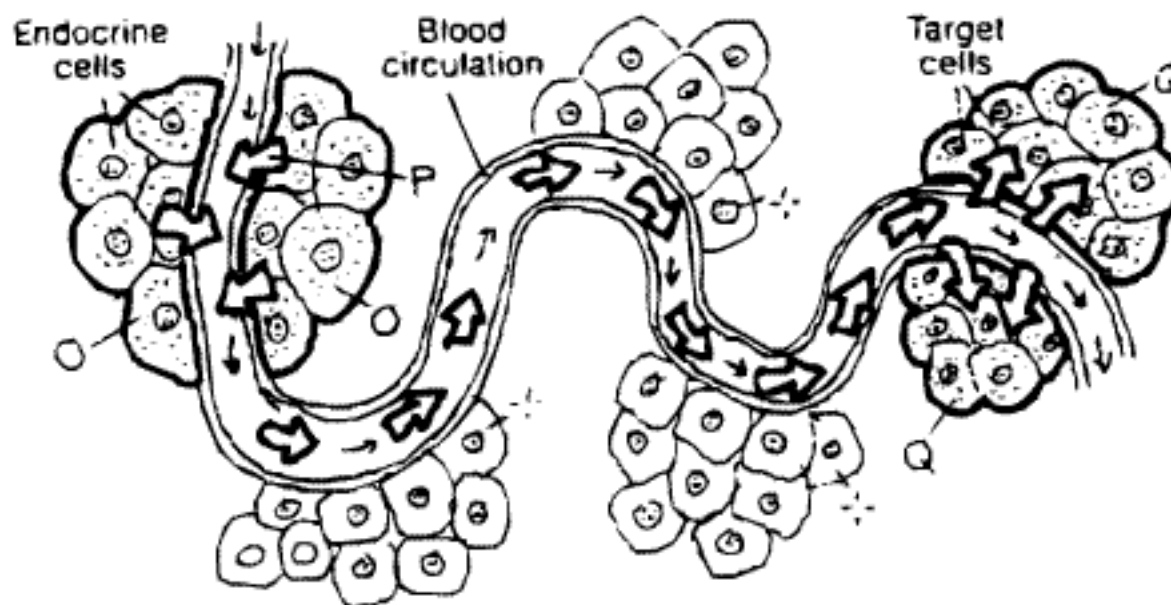


Endocrine System Review



- ENDOCRINE GLANDS:-**
- HYPOPHYSIS (PITUITARY) A**
 - PINEAL B**
 - THYROID C**
 - PARATHYROID (4) D**
 - THYMUS E**
 - ADRENAL (SUPRARENAL) (2) F**
 - PANCREAS G**
 - OVARY (2) H**
 - TESTIS (2) I**
- ENDOCRINE TISSUES:-**
- HYPOTHALAMUS J**
 - HEART (ATRIA) K**
 - KIDNEY (2) L**
 - GASTROINTESTINAL TRACT M**
 - PLACENTA N**

ENDOCRINE FUNCTION



ENDOCRINE GLAND .
HORMONAL SECRETION P
TARGET ORGAN Q