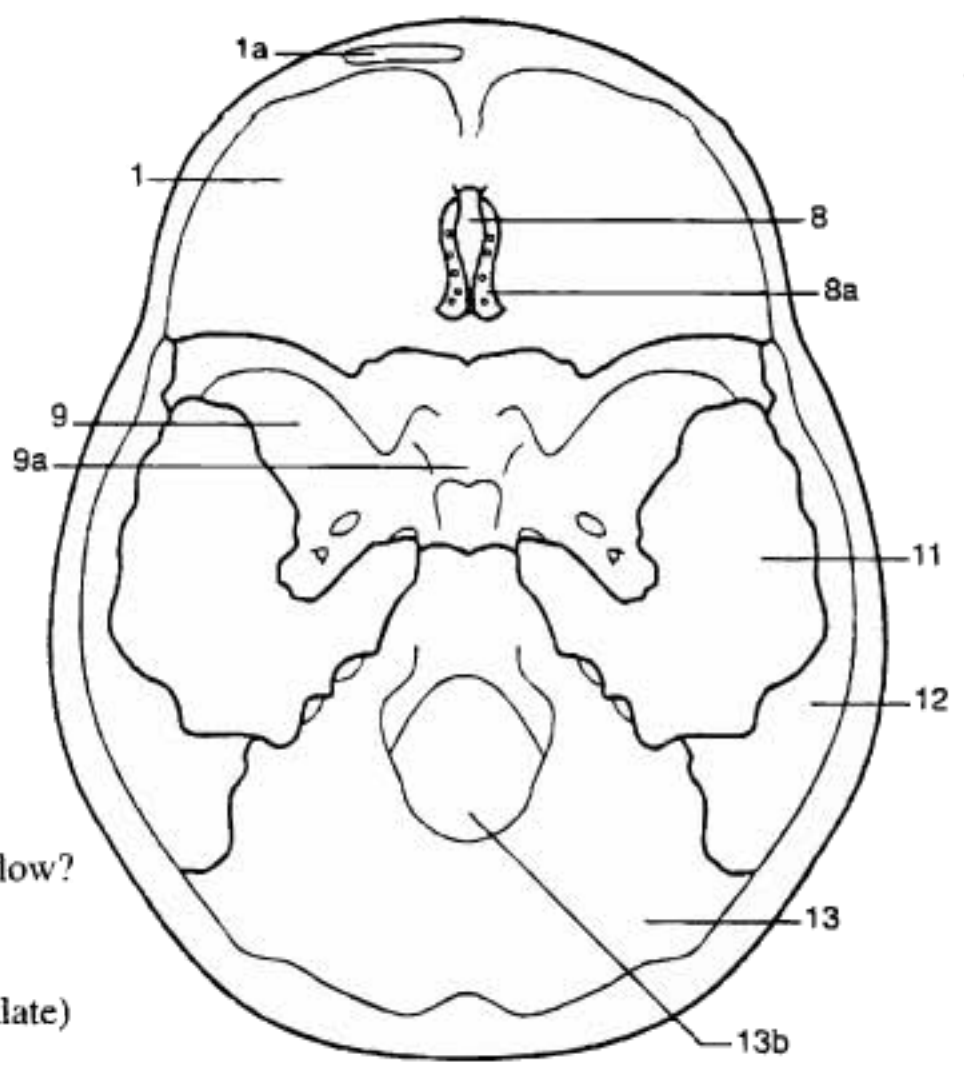


Inferior view of skull.



Superior view of inside of skull.

1. Which bones are described below?

- a. orbit of the eye
- b. roof of the mouth (hard palate)
- c. jaw
- d. cheek bone
- e. teeth embedded

---



---



---



---



---

2. What bone contains the opening of the ear?

---

3. Which bone articulates with vertebral column?

---

4. What functions are served by the following?

- a. occipital condyles
- b. sella turcica

---



---

5. The nerves of the spinal cord enter the brain through the opening called the \_\_\_\_\_.

---

6. The zygomatic arch includes parts of the \_\_\_\_\_ bone and the \_\_\_\_\_ bone.

---