

Levels of Human Biology

Color (trace) and label:

1.
 - a. C
 - b. O
 - c. O
2. O
3. O
4. O

Label:

- a.
- b.
- c.
- d.

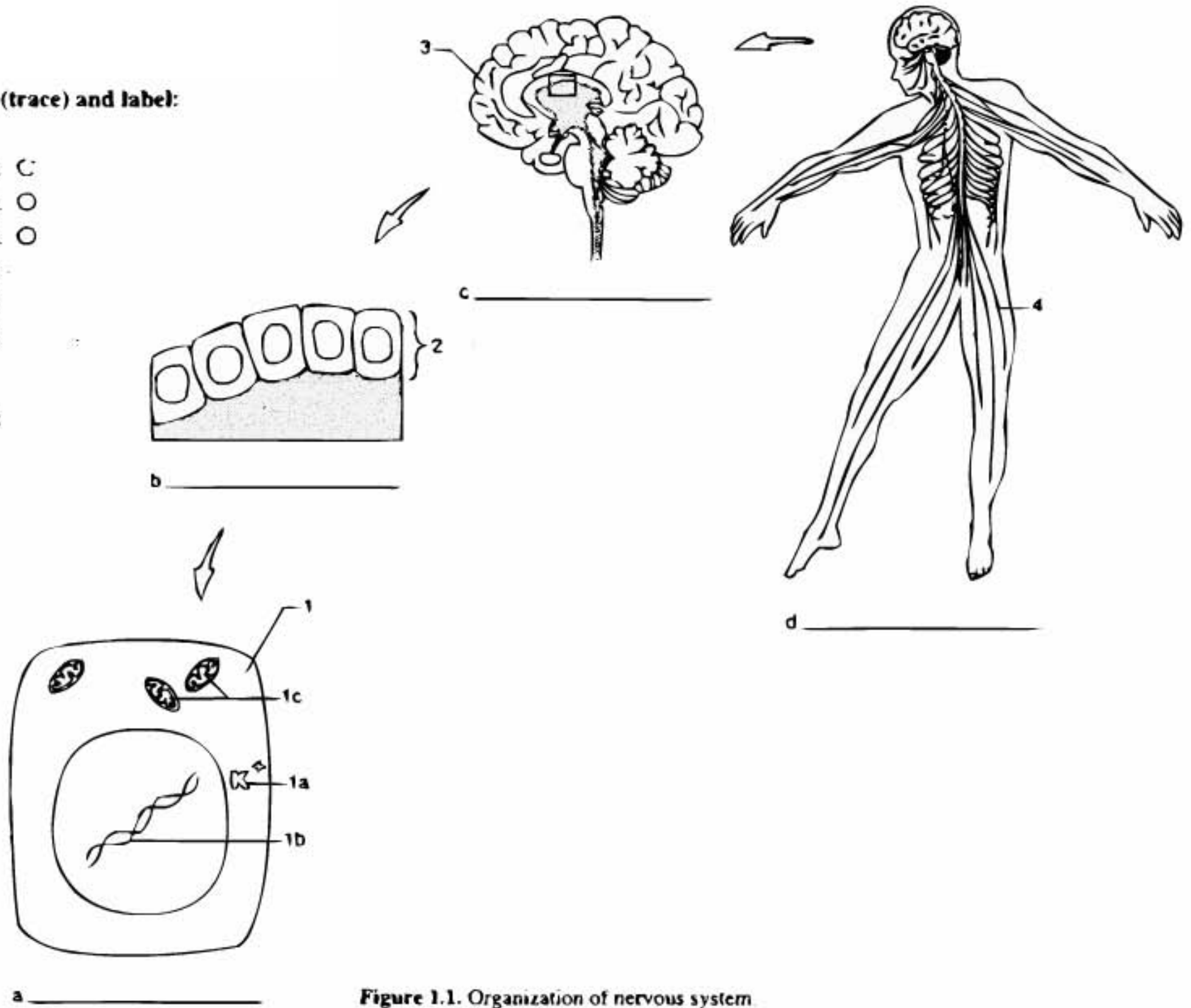


Figure 1.1. Organization of nervous system.

Exercise 1.1:

1. The structural and functional unit of living material is the cell.
 - a. It contains functional subunits called _____.
 - b. Cell function also depends upon the presence of specific _____.
2. Groups of similar cells that perform a particular function are _____.
3. The structures that contain different tissues organized to perform a general function are _____.
4. A group of organs that work together to carry out a general function is a(n) _____.